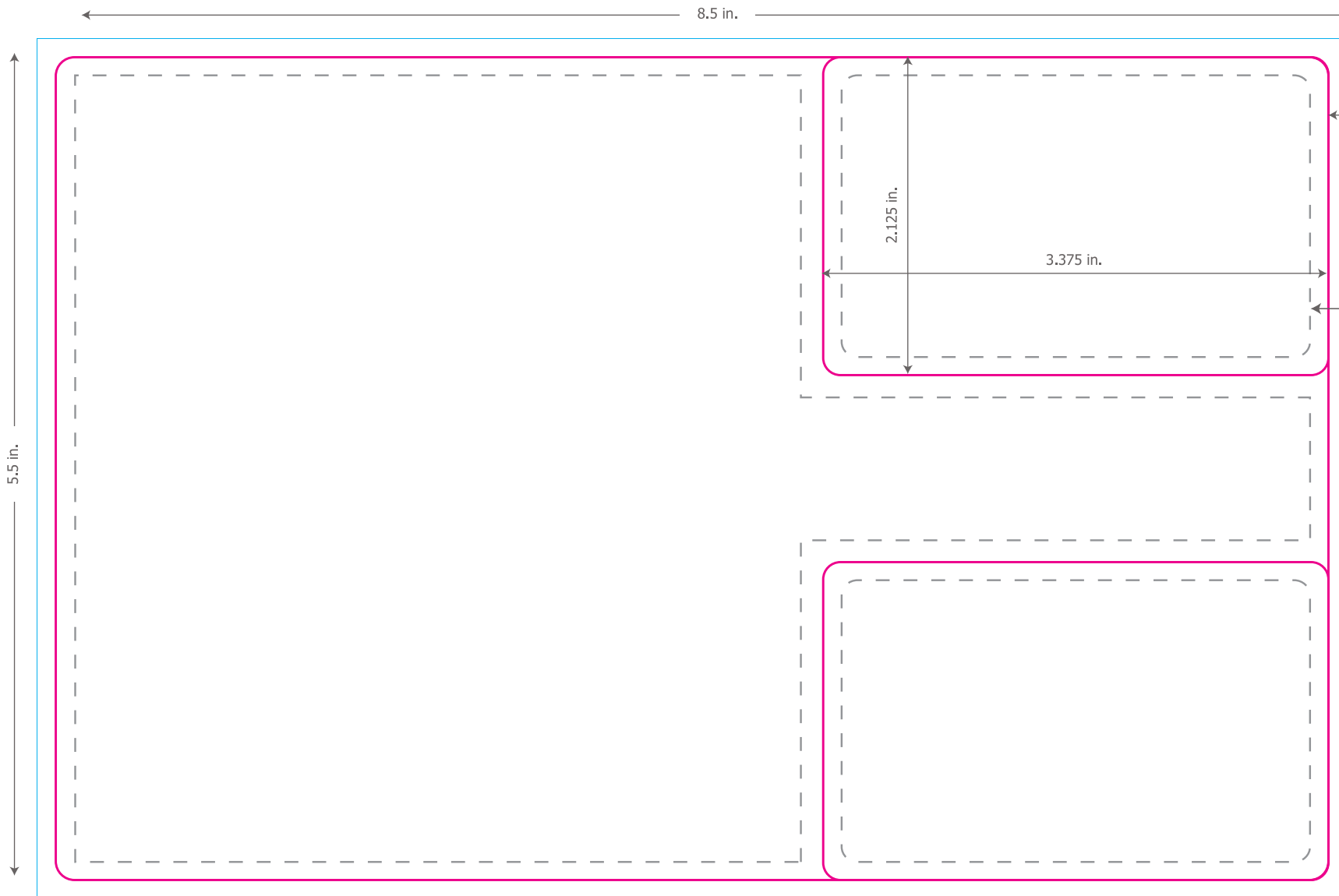




IMPORTANT INFORMATION BEFORE YOU SEND YOUR ARTWORK TO TELE-PAK:

1. PLEASE KEEP YOUR ARTWORK IN LAYERS, DO NOT FLATTEN IT.
2. PLEASE **OUTLINE ALL FONTS/TYPE** IN ILLUSTRATOR (OR RASTERIZE THEM IN PHOTOSHOP).
3. IF USING ANY OTHER PROGRAM, PLEASE INCLUDE THE FONT FILES WHEN SENDING IN THE ARTWORK.
4. PLEASE EMBED ALL IMAGES - DO NOT LINK
5. ZIP YOUR FILE(S) AND UPLOAD AT WWW.MYCARDART.COM

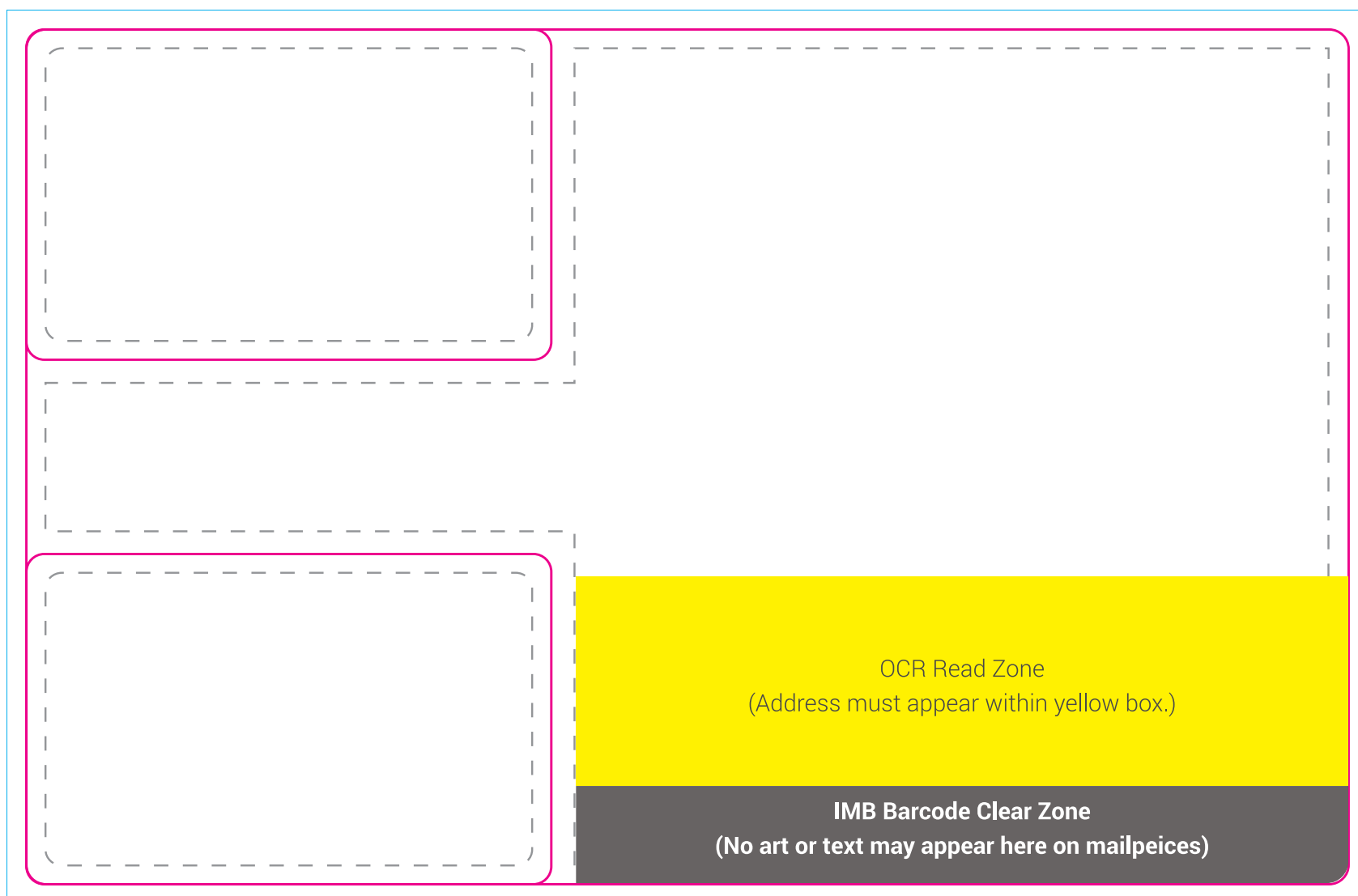
FRONT



IMPORTANT!
If your color or image touches this edge, then you must extend it to the blue line. This applies to all four edges, on both the front and the back.

IMPORTANT!
This is a safety area. Please do not let type or anything important go beyond the dotted lines - it runs the risk of being cut off in the diecutting process.

BACK



OCR Read Zone
(Address must appear within yellow box.)

IMB Barcode Clear Zone
(No art or text may appear here on mailpeices)